

AIR CONTROL



HVAC & REFRIGERATION SYSTEMS

OFFSHORE ■ MARINE ■ INDUSTRIAL

ABOUT US



AIR CONTROL, today, is a name which stands for quality, consistency and technical support in the HVAC field. A name trusted by many corporate and multinationals as a true performer in any given conditions. Incorporated in 1982 to cater the needs of the growing climate control industry in India. It has emerged today as a market leader in association with CARRIER for the turn-key Offshore, Marine & Industrial projects in HVAC and Refrigeration field. Because of our quality assurance proven products, excellent after sales services, we have been rewarded with repeated orders from most of our clients.

Our Mission

To Design, Engineer, Install and Commission any type of specialised or custom-built HVAC and Refrigeration systems in the stipulated time followed by technical and after sales support anywhere on the Globe.

Our Team

We are a Qualified and highly Experienced team of Engineers and Consultants who have undergone extensive training to satisfy every HVAC requirement of today. Our Engineers are supported by a team of skilled technicians and who ensure

ABOUT US

proper installation of our system. Besides we have our very own customer support and after sales service teams to fulfill individual customer needs in the years to come.

Our Partners



Over the years we have teamed up with many national and international companies to deliver the best goods and services to our clients. AIR CONTROL is the Dealer for Carrier marine Products in India. Our field experience backed by the Carrier brand name will ensure a world class system at Indian prices.

Besides we also source our products from reputed companies such as Siemens, Johnson Controls, Sauter, Honeywell, Rosemont etc. who themselves are leaders in the equipment manufacture fields.

Engineering and Technology

With continuous innovation, research and developments, we have achieved, technological excellence in our field. All our projects get a personalized attention from our engineers for a detailed analysis. Using the latest system design and CAD softwares, we can achieve a very high level of perfection in our systems to guarantee an economical and optimum performing system. The major equipment for our systems is sourced from our partners who themselves have shown a remarkable level of technology. All our systems have sophisticated logic controls instrumentation to maintain precise levels of temperature, humidity, pressures and cleanliness of air. These are just a few things which go on to make a reliable and trouble free system.

After Sales Services

Systems, engineered and designed by us, seldom require any after sales service. However we do have a full-fledged service team which will be made available in the shortest time along with the necessary equipments to render prompt and efficient service in India and abroad.



Our Creations

It would just not be possible to list all our projects completed in the past two decades, however to get a brief idea of the diverse projects handled by us, kindly refer to the last page for a short list of our ever increasing satisfied clients who have showed their continuous patronage by giving repeat orders.



SERVICES

On Board Studies

Upon request, we will carry out on board feasibility studies and prepare a preliminary report to help the client decide on an optimum HVAC system. We will also take necessary onsite measurements for further detailed analysis by our engineering team.

Design & Engineering

We carry out detailed engineering from your data and will provide with heat load calculations, layout diagrams etc. A snap shot of our activities listed in the engineering section.

Equipment Supply

Based on our engineering and design, we will select the most appropriate and power efficient equipments for our clients. Our sourcing comes primarily from Carrier marine systems group along with our various other vendors from across the world who are themselves the leaders in equipment manufacturing.

Installation & Commissioning

We carry out complete turnkey installation and commissioning of our equipments to give you a hassle free experience and a single contact for HVAC related items. Our services also include standalone commissioning where the client decides to install equipment in-house.

After Sales Service & Spares

All equipment supplied by us carries a 1 year warranty and we will be happy to send our technicians to your works to carry out any break down service. In future we will also service you with necessary spare parts for our systems.



ENGINEERING AND TECHNOLOGY

Computerised Heat Load Calculation

DESIGN CONDITIONS ;-

IN SUMMER:- OUT SIDE : 40 deg. C; RH : 90 % Fresh air : 40%

IN SIDE : 26 deg. C; RH : 50 %



HEAT LOAD CALCULATION

Description	Capacity BTU/hr	Load BTU/hr	Air Load BTU/hr	Load kW	Fresh Air cfm	Air Flow cfm	People	Load per Person BTU / hr	Full Load	Chiller Cooling BTU/hr	w/o DCV Chiller Cooling BTU/hr	On Coil			Calculations	
												dbt F	lbmv/lbma	wbt	cfm-F	cfm-lb/lb
MESS ROOM- MAIN DECK	366,066	102,997	304,802	-	1,363	3,406	120	420	Y	366,066	366,066	88,880	0.023966	302749.2	81.6352	
CENTRAL LAUNDRY - MAIN DECK	53,428	12,489	46,022	-	206	514	2	420	Y	53,428	53,428	88,880	0.023242	45712.5	11.9537	
CHANGE ROOM - MAIN DECK	93,851	23,821	79,705	-	356	891	15	420	Y	93,851	93,851	88,880	0.023541	79168.6	20.9690	
HOSPITAL & PARA MADIC - MAIN DECK	51,204	12,311	43,901	-	196	491	4	420	Y	51,204	51,204	88,880	0.023340	43605.2	11.4510	
OFFICE & MEETING ROOM - MAIN DECK	58,701	15,165	49,693	-	222	555	11	420	Y	58,701	58,701	88,880	0.023610	49358.6	13.1114	
WELD OFFICE - MAIN DECK	31,878	7,420	27,479	-	123	307	1	420	Y	31,878	31,878	88,880	0.023227	27294.0	7.1328	
EMGR'S OFFICE - MAIN DECK	33,003	7,840	28,353	-	127	317	2	420	Y	33,003	33,003	88,880	0.023298	28162.2	7.3821	
OFFICER MESS-MAIN DECK	82,766	24,249	68,334	-	305	764	33	420	Y	82,766	82,766	88,880	0.024151	67873.3	18.4427	
GALLEY-MAIN DECK	73,961	17,163	63,786	-	285	713	2	420	Y	73,961	73,961	88,880	0.023217	63356.3	16.5497	
PROVISION STORE-MAIN DECK	41,970	9,553	36,308	-	162	406	-	420	Y	41,970	41,970	88,880	0.023152	36063.9	9.3942	
2 MEN STBD @36-38 - ACCOM. 1 DECK	14,561	3,642	12,399	-	55	139	2	420	Y	14,561	14,561	88,880	0.023486	12315.0	3.2541	
2 MEN STBD CENTER @33-35- ACCOM. 2 DECK	14,019	3,519	11,930	-	53	133	2	420	Y	14,019	14,019	88,880	0.023499	11849.2	3.1328	
2 MEN STBD CENTER @35-36- ACCOM. 2 DECK	5,282	1,530	4,372	-	20	49	2	420	Y	5,282	5,282	88,880	0.024098	4342.1	1.1773	
2 MEN PORT CENTER @47-50- ACCOM. 2 DECK	22,884	5,537	19,599	-	88	219	2	420	Y	22,884	22,884	88,880	0.023363	19467.1	5.1171	
2 MEN STBD CENTER @33-35- ACCOM. 3 DECK	14,019	3,519	11,930	-	53	133	2	420	Y	14,019	14,019	88,880	0.023499	11849.2	3.1328	
2 MEN STBD CENTER @35-36- ACCOM. 3 DECK	5,282	1,530	4,372	-	20	49	2	420	Y	5,282	5,282	88,880	0.024098	4342.1	1.1773	
2 MEN PORT @33-35- ACCOM. 2 DECK	24,006	5,792	20,569	-	92	230	2	420	Y	24,006	24,006	88,880	0.023353	20430.6	5.3681	
2 MEN PORT @35-36- ACCOM. 3 DECK	14,561	3,642	12,399	-	55	139	2	420	Y	14,561	14,561	88,880	0.023486	12315.0	3.2541	
2 MEN PORT 36-38- ACCOM. 3 DECK	14,561	3,642	12,399	-	55	139	2	420	Y	14,561	14,561	88,880	0.023486	12315.0	3.2541	
1 MAN PORT@ 41-42- ACCOM. 4 DECK	13,436	3,222	11,524	-	52	129	1	420	Y	13,436	13,436	88,880	0.023331	11446.7	3.0048	
2 MEN PORT@ 48-50- ACCOM. 4 DECK	14,561	3,642	12,399	-	55	139	2	420	Y	14,561	14,561	88,880	0.023486	12315.0	3.2541	
2 MEN PORT@50-51- ACCOM. 4 DECK	14,561	3,642	12,399	-	55	139	2	420	Y	14,561	14,561	88,880	0.023486	12315.0	3.2541	
ARRIVAL/DEPARTURE ROOM	144,637	35,709	123,442	-	552	1,380	17	420	Y	144,637	144,637	88,880	0.023437	122610.9	32.3313	
CONTROL ROOM	113,026	90,129	24,160	-	108	3,780	6	420	Y	113,026	113,026	79,520	0.010386	300562.2	39.2562	
					-	4,659	15,157	236	Total (BTU/hr) 1,316,224		1,316,224					
									Total (tons)		109.69					
Summary	Capacity BTU/hr					Airflow cfm	15,157					On Coil				
	221,609					2,100						88.88	0.023570	66.6		
	623,251					5,857						88.88	0.023752	78.7		

Our sophisticated heat load calculation software gives accurate cooling, heating and air flow requirements from the General arrangement drawings. The software has been developed with inputs from Carrier and the calculations are accepted as industry standard worldwide.

Ventilation Calculations

All Ventilation air flow calculations are done as per Class rules to ensure sufficient air changes in each compartment. The calculations also reflect the fan capacity selections along with static pressure details.

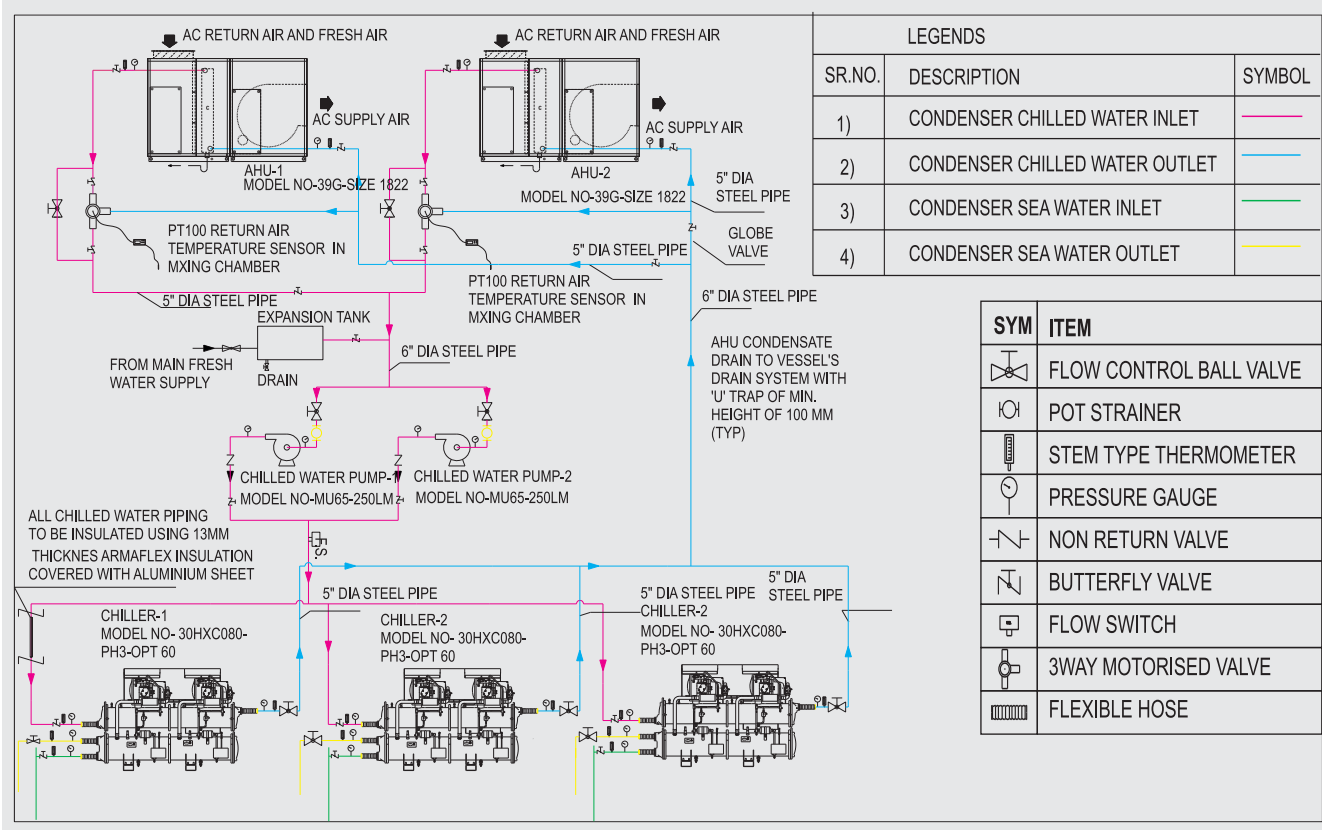
Engine Room Air Flow Calculations

Engine room airflow calculations form the most critical component of the ventilation system and are done strictly as per IS rules. The air flow requirements incorporate breathing air for the engines as well as to cater the heat emissions from various motors in the engine room. We ensure adequate airflow requirements to keep the engine room temperature below 50 deg. C.

ENGINEERING AND TECHNOLOGY

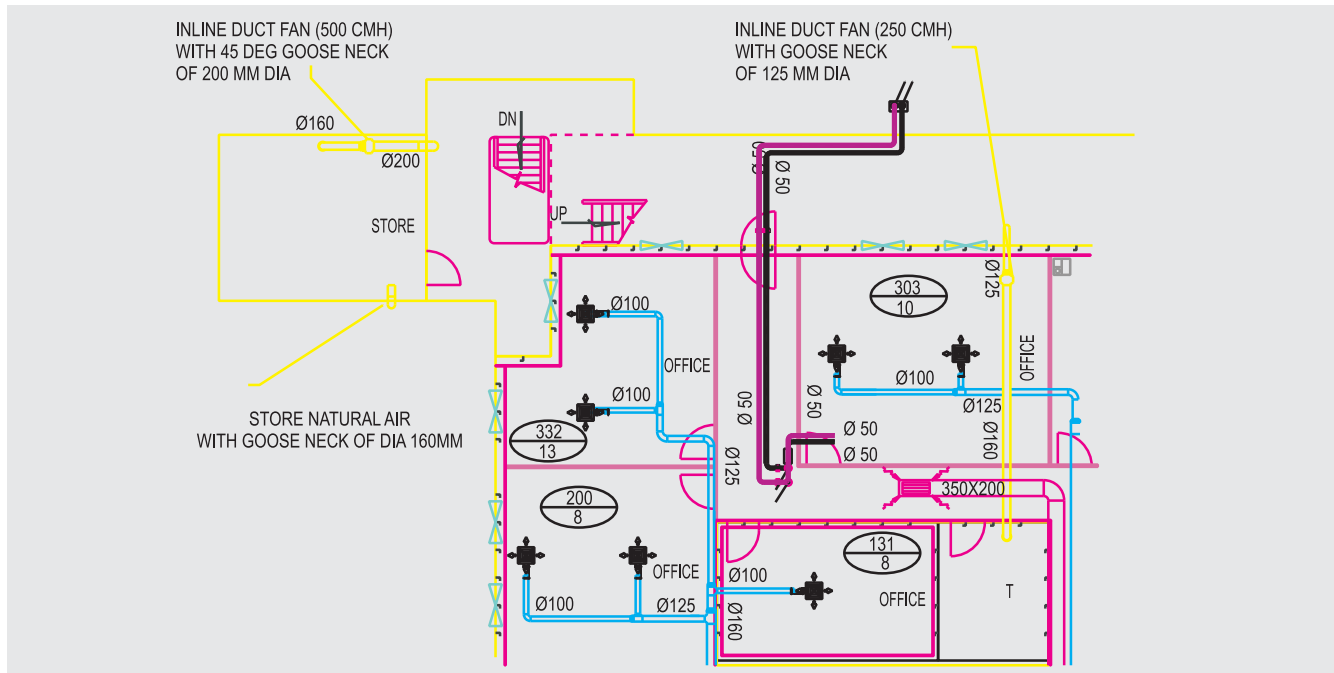
P & I Diagram

Schematic line diagrams indicating all components in the system along with field connections for an easy on site installation job. The P&I also will serve the onboard staff for any quick trouble shooting in the future.



Layout Drawings

Our detailed Duct layout drawings include all duct sizing, all components like fire dampers, non return valves etc, along with air flow and air changes in each compartment. These drawings may be also be used for class submittals and approvals.



PRODUCT RANGE

Air Conditioning System

Compressors

5F, 5H Compressors

The 5F, H line of open compressors combines economy & dependability in twelve single compressor sizes. They're the most widely used compressors for refrigerated food storage and processing ... equally efficient for air conditioning ... the result of 50 years of Carrier experience in refrigeration and air conditioning systems and constant research.



Refrigerants : 134A, 404A, 407C

Cooling Capacities : 5-150 tons (17.6-527 kW)

Features: Continuous oil filtration. Safety relief valves. Oil pressure safety switch. Quiet

operation. Part load operation. Interchangeable parts. Totally field repairable.

06D, 06E Semi-hermetic Compressors

06 Semi-hermetic

Compressors Refrigerants : 134A, 404A, 407C

Cooling Capacities : 5-40 tons (17.6-140.6 kW)

Features : Easily serviceable, compact, lightweight 18-99 cfm hermetic compressors for air conditioning or refrigeration with water-cooled, air-cooled, or evaporative condensers. Ideal for



replacement applications. Dynamically balanced moving parts for quiet operation and long life. 06D shown.

Condensers

5F and 09RH Water-cooled Condensers

Carrier Transicold 5F and 09RH water-cooled condensers help provide comfortable air conditioning for your crew or refrigeration for your cargo wherever you're bound.

Refrigerants: 134A, 404A 407C

Cooling Capacities: 5-200 tons (17.6-703.4 kW)

Features: Choose 5F for small load applications, 09RH for medium to heavy loads. Non-ferrous integral



finned tubes. Bell mouth ends. Removable heads on shell-and-tube models. Spring-loaded pressure relief valves or frangible discs as safety devices. Models 5F20 and 30:90/10 copper-nickel tubes, steel shell. Models 5F40, 5F60, and 09RH:90/10 copper-nickel tubes and tube sheets. Double liquid outlet drains. 09RH shown.

Chillers

30HXC

30HXC Screw Chiller

Multiple Semi-hermetic Screw Compressors Controls Dual Refrigerant Circuits

30HXA- shell & tube evap - remote cond.

30HXC- shell & tube evap - 90/10 Cu/Ni shell & tube cond.

Features:

- * Common platform 70 to 265 tons
- * Dual circuit, HFC-134a
- * Marine condenser with 90/10 Cu/Ni tubes and tubesheets and cast bronze heads
- * NEMA 4/4X Enclosures for main control box, compressor junction boxes, and pressure sensors
- * Built-in dual chiller control
- * Isolation valves standard
- * Factory installed flow switch standard
- * Oil pump ensures compressor lubrication (start & low lift)
- * Leaving temp set point resolution of 0.1F
- * EXV re-calibrates with every start.
- * Wye-Delta or XL start
- * Fits anywhere, very compact in size, in fact its the Narrowest chiller in its class.



19XR Centrifugal Chillers

High capacity and Maximum Efficiency with R-22 and R134 a refrigerants

Most technologically advanced centrifugal chillers for shipboard duty. Compact modular design, high efficiency, trouble free operation, and a choice of environmentally responsive refrigerants add to the exceptional versatility of every carrier 90 XR Chiller.



Superior quality and reliability for long-life operation.

High performance, high efficiency.

High capacity, 200 to 520 ton (700 to 1,830 kW).

Semi-hermetic design for maximum system reliability.

Automatic self diagnostic operation for safety and easier servicing.

Small footprint. Up to 35% more compact than conventional chillers.

Microprocessor controls maximize unattended unit operation. Simplified integration with ship's control systems. Compatible with Carrier's advanced air-quality improvement product, such as heat recovery devices and smoke and fume filtration systems.

Modular design facilitates chiller disassembly/reassembly for installation in extremely tight spaces. Ideal for ship retrofit programs.

Worldwide service and parts support.

PRODUCT RANGE

Air Cooled Chiller



Floating drydocks, oil rigs, and inter-coastal vessels which require air conditioning on board demand an economical 30G. All units offer significant cost-saving advantages at installation, over years of operation, and reduce service and maintenance costs too. Choose from many economical sizes, ranging from 15-420 tons (52.7-1,477 kW)

30GT

Refrigerant: 134

Cooling Capacities: 15-420 tons (52.7-1,477 kW)

Features: Completely factory wired, assembled and charged. Easy access to compressor, cooler. Suction cutoff unloaders. 30GT units use the Carrier Flotron control system. Marine copper condenser coils available.

Condensing Unit

90 Y "Sea Horse" packaged marine Condensing Units



Available in a wide range of capacities, the 90 YF, YH include marine condenser, motor and control panel all in a single, factory-assembled unit.

Refrigerants: 134A

Capacities: 0.94 -135 tons (3.3-474.7 kW)

Features:

Utilizes a full line of compressors with internal capacity control and pressure lubrication. Quiet operation. Oil pressure safety switch. Contractors and overload protection. Refrigerant suction and discharge gauges. Oil pressure gauge. Single pump-out control. Time-guard circuit. Crankcase heater relay. Across-the-line starting. Marine construction throughout 90YK shown.

Package Unit



90 MA Single-package Marine Cooling Units

Available in four sizes (004-012), the 90 MA cools, heats, dehumidifies, and filters.

Refrigerant: 134A

Cooling: 3-10 tons (10.6-35.2 kW)

Heating: 7.9-24.7 kW

Features:

Seawater cooled. Quiet, high capacity fans, accessory plenum for free-blow system. Heavy gauge galvanized steel cabinet. Easy-to-remove panels for simple maintenance. Low cost installation. Tube-in-tube condenser of 90/10 copper-nickel. Permanent cleanable filters, double drains and seawater regulating valve are standard.

Air Handling Unit

39MN

Available in a wide range of blow-thru and draw-thru arrangements and constructed for long life and top performance in large heating and cooling applications.

Refrigerants: 134A, 407C

Cooling/Heating Coils: Chilled Water, Direct Expansion, Hot Water, Steam.

Capacities: 1,000-55,000 cfm (478-25,960 L/s)



39G

Available in a wide range of blow-thru and draw-thru arrangements and constructed for long life and top performance in large heating and cooling applications.

Refrigerants: 134A, 407C

Cooling/Heating Coils: Chilled Water, Direct Expansion, Hot Water, Steam.

Capacities: 1,000-55,000 cfm (478-25,960 L/s)



39L, 39N, 39T Central Station Air-handling Units

Available in a wide range of blow-thru and draw-thru arrangements and constructed for long life and top performance in large heating and cooling applications.

Refrigerants: 134A, 407C

Cooling/Heating Coils: Chilled Water, Direct Expansion, Hot Water, Steam.

Capacities: 1,000-55,000 cfm (478-25,960 L/s)



40 RU Direct Expansion Fan-Coil Units

For conditioned air wherever crew or passengers require it. Units may be deck Mounted or suspended overhead.

Refrigerants: 134A

Capacities: 6-30 tons

(21.1-105.5 kW)

Coupled with appropriate condensing units, 40RM units will produce nominal cooling capacities of 6 to 30 tons (21.1-105.5 kW).

Features: Belt-drive centrifugal fans. Insulated casing. Adaptable to heat pump services (7.5, 10, and 15 ton sizes only). Accessory electric heaters available up to 70 kW. Accessory hot water or steam coils available up to 950,000 Btuh (278 kW). Marine double drains available. Marine copper evaporator coil and double drains available.



PRODUCT RANGE

Fan Coil Unit

42 DD

42 D Ducted Fan-Coil Unit



Capacities: 600-2,000cfm (283.1-943.8 L/s)

Features: Heavy gauge galvanized steel. Uses minimum space. Quiet operation. Fully insulated cabinet to muffle noise sound direct - drive, forward - curved fan. Easy access. Insulated condensate pans. Select 3,4,5 or 6 row coils. For 2, 3 or 4-pipe system. 42D shown.

42B System Fan-Coil Unit

Capacities: 800-4,000 cfm (377.5-1,887.6 L/s)

Features: Heavy gauge cold rolled or galvanized steel. Removable side panels. Fully insulated to muffle noise and prevent sweating. Belt-driven, adjustable motor. Single or 3-phase motors standard from 1/6 to 2 hp (0.124 to 1.49 kW). Select 4 or 6 row cooling coils. Forward-curved, centrifugal, double-inlet fan wheels.

4VB

42V, C Room Fan-Coil Units

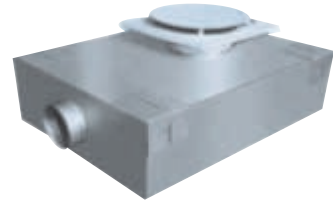
Capacities: 150-1,200 cfm (70.8-66.3 L/s)

Features: 42V is vertical, 42C horizontal. Cabinet or furred-in units. Numerous control systems. Select up to 5 row coils. For 2, 3, or 4-pipe system. Quiet operation. Low fan speed. Uses minimum space. Available with 3-row DX coil (R134, R404), sheathed electric heaters, double drains, and special-design drain pans. 42V shown.



Diffusers

Cabin diffusers and return air grills with dampers for regulating airflow.



Unit Coolers

Freezer room unit coolers complete with auto defrost and drain heaters.

Refrigerants: R 404, R 407C,



Centrifugal Fans



Centrifugal fans for ventilation of areas such as galley etc. Available in different materials, primed and painted steel, galvanized steel, marine-corrosion-resistant aluminium and stainless steel.

Performance

* Ranges from 500m³ / hr to 250000m³ / hr and static pressure up to 125mm'

Ducting

Our air distribution system comprising of rectangular and high pressure spiral ducting is made out of high quality galvanized sheets.

Availability: Insulated or non-insulated.



Ventilation System

Axial Flow Fans

Axial flow fans for ventilation areas such as engine room, bow thruster etc. Available in different materials, primed and painted steel, galvanized steel, marine-corrosion-resistant aluminum and stainless steel.



Performance

* Ranges from 100m³/hr to 250000m³/hr and static pressure up to 125mm.

* Available from sizes 150mm to 2000mm diameter.

Explosion Proof Fans

Certain shipboard areas onboard chemical tankers, oil tankers, gas carriers and special cargo ships have class requirements of spark proof and explosion proof fans. Air control offers a wide range of special fans for installation in this type of areas.



Inline Duct Fans

Inline duct fans for compact installation for toilet ventilation, laundry etc. Available in GI and FRP light weight construction.

Performance

Ranges from 100m³/hr to 3000m³/hr



PRODUCT RANGE

Ancillary Items

Fire Dampers

Class approved fire dampers with electric or pneumatic operations. Automatic operation with fusible link.



Electrical Control Panel

Electrical control panels with a user friendly interface IP56 panels are standard



Pumps



Sea water and chilled water pumps. Sea water pumps available in bronze or stainless steel, Also available in explosion proof motors.

Marine Architectural & Interior works

Interior Services

Air Control in collaboration with an experienced team has now ventured into additional portfolio with supply of marine outfits such as Windows , WET & WT Doors , CVS , Window Wipers , Galley and Laundry Equipments together with Turnkey Marine Modular System .

The Turnkey solution that we provide design, sourcing out approved products , installation and the commissioning of complete marine modular accommodation system including , accommodation piping , electrification , insulation , HVAC , supply of FFA & LSA items etc

A team of experienced professional management group lead the projects with qualified designer , Naval Architecture, skilled craftsman , well trained engineers

Our Capabilities

DESIGNING

- Concept Design
- 2D/3D Modeling
- Detailed Design
- Cass Approvals
- Material Selection
- As - fitted Drawings

LOGISTICS:

- Evaluation Of Suppliers
- Strategic Sourcing
- Vendor Negotiations
- Procurement & Inventory Management

INSTALLATION

- Architectural
- Carpentry & Joinery
- Wall & Ceiling Paneling
- Furniture
- Access Hatches
- Windows, Scuttles and Wheelhouse
- Windows Marine Doors
- Accommodation Piping
- Pipe Routing
- Drain Piping
- Sanitary supply & Discharge piping
- Fresh water, Grey water, Black water& Sea water
- Press-Fit, Braced & Welded Piping

Flooring & Insulation

- Deck coverings - Self Leveling,
- Raised , Wooden , Floating Floor
- Floor Finishing - Epoxy, Vinyl, Tile
- Pinning & Cladding
- Glass Wool Insulation
- Mineral Wool Insulation

Galley Equipment



Deck insulation and ducting



LIST OF PROJECTS

SR. NO.	DESCRIPTION OF THE VESSEL	QTY	NAME OF THE SHIPYARD
01	Mini bulk Carrier for M/s Vikram Ispat Ltd	6 Nos	ABG Shipyard Ltd. India
02	Cement bulk carrier for M/s Gujarat Ambuja Ltd.	4 Nos	ABG Shipyard Ltd. India
03	Newsprint Carrier for M/s LYS LINE NORWAY	3 Nos	ABG Shipyard Ltd. India
04	Floating crane for ESSAR Steel Ltd. & For Figee Holland	2 Nos	ABG Shipyard Ltd. India
05	AHT for Halul Off shore Services Co. Qatar	4 Nos	ABG Shipyard Ltd. India
06	Offshore supply vessel for ALMANSOORI , UAE	2 Nos	ABG Shipyard Ltd. India
07	500 Pax vessel for Andaman Island (SCI)	1 No	ABG Shipyard Ltd. India
08	4000 DWT Cement Carrier	2 Nos	ABG Shipyard Ltd. India
09	Diving support vessel for Mutawa Marine (UAE)	2 Nos	Dubai Drydocks, Dubai
10	Bunker Tanker of 6200 DWT	4 Nos	Dubai Drydocks, Dubai
11	400 PAX vessel for Lakswadeep Island (SCI)	1 No	Alcock Ashdown (Gujarat) Ltd.India
12	3000 DWT Product Tankers 247-248 for Adani	2 Nos	Alcock Ashdown (Gujarat) Ltd.India
13	Offshore Fast crew boat-34 mtr-85 pax.	6 Nos	NGV TECH SDN BHD, Malaysia
14	32 mtr 50 Pax High speed craft (CATAMARAN)	3 Nos	NGV TECH SDN BHD, Malaysia
15	18 Mtr . 20 PAX Fast Speed Boats	2 Nos	NGV TECH SDN BHD, Malaysia
16	36M Utility Workboat for Bakri Saudi Arabia	2 Nos	NGV TECH SDN BHD, Malaysia
17	Diesel tanker cum Ro-Ro vessel	1 No	Bharati Shipyard Ltd.India
18	Raziya Sultana for Coast Guard	1 No	Goa Shipyard Ltd. India
19	Bulk Carrier	1 No	Chowgule Shipyard Ltd. Goa
20	63M Anchor Handling Tugs for Great Eastern Shipping	2 Nos	Colombo Dockyard Ltd. Sri Lanka
21	Diving Support Vessel for Halani International, UAE	1 No	Batam Shipyard, Indonesia
22	Halani 1 Vessel - Conversion into 450 Pax Accomodation barge for Halani International, UAE	1 No	Zhoushan Hongzhou Ship Building Co. Ltd. China
23	1330 DWT Product Tanker	1 No	Modest Infrastructure Pvt. Ltd. India
24	1450 DWT Product Tanker	2 Nos	Modest Infrastructure Pvt. Ltd. India
25	Geotech - Survey Vessle cum Workboat	1 No	Modest Infrastructure Pvt. Ltd. India
26	175M Luxury Yacht (M.Y.DUBAI)	1 No	Platinum Yacht FZCO, U.A.E
27	Luxury Yacht (M.Y.DUBAWI)	1 No	Platinum Yacht FZCO, U.A.E
28	38 MTR Escort Tugs	4 Nos	Grandweld, Dubai-UAE
29	SX 124 & 134 seismic vessels for Ulstein	6 Nos	Dubai Dry Dock, Dubai
30	65 Ton Terminal Support Tugs	2 Nos	NGV TECH SDN BHD, Malaysia
31	2800DWT Cement Carriers	1 No	Modest Shipyard Ltd. India
32	V. No. 400 B.P. Tug	1 No	Bharati Shipyard Ltd. India
33	Refrigerated Fishing Trawler	1 No	Cochin Shipyard Ltd.India
34	400 PAX Accommodation Barges	2 Nos	NGV TECH SDN BHD, Malaysia
35	55 MTR DSV	1 No	Grandweld, Dubai-UAE
36	2800DWT Cement Carriers	1 No	Modest Shipyard Ltd., India
37	1700DWT Product Tankers	2 Nos	Modest Shipyard Ltd., India
38	32 MTR TUG BOAT	2 Nos	Grandweld, Dubai-UAE
39	57 MTR DSV	2 Nos	Grandweld, Dubai-UAE
40	550 T Fuel Barge of Indian Navy	7 Nos	Modest Shipyard Ltd., India
41	Crane Barges for Kuwait Oil Company	4 Nos	Grandweld Shipyard, UAE
42	M.Y Mirqab II	1 No	Nakilat Damen, Qatar
43	MPV for Prince Marine	1 No	Global Shipyard, UAE
44	PSV for Bourbon	6 No	Grandweld, UAE
45	Tug boats for Jana Marine, KSA	2 nos	Grandweld, UAE
46	INS Shishumar Class Submarine for Indian Navy	1 No	Mazagon Dock, India
47	Fuel barges of 4600 DWT for Mahati Infra	2 nos	Mahati Infra, Uganda
	Offshore Oil Rigs and Platforms		
1	Offshore Drilling Vessel (Retrofit job), MODU SAGAR VIJAY - ONGC	1 No	Cochin Shipyard Ltd.India
2	Offshore Rig (Retrofit job) Pride Pennsylvania	1 No	Western India Shipyard, Goa,India
3	Sagar Uday Jack Up rig - ONGC	1 No	L & T Ltd., India
4	Yetagun Platform for Petronas, Myanmar	1 No	L&T Ltd, India
5	Sagar Laxmi Conversion for ONGC India	1 No	Pipavav Shipyard, India
6	Sagar Samrat Conversion for Seven Seas Services / ONGC India	1 No	GPC, Abu Dhabi, UAE
7	Heera Platfrom for ONGC India	1 No	Offshore, Mumbai High, India
8	Rig CMD for Rig Fit, UAE	1 No	ASRY Shipyard, Bahrain
9	KG Basin Platform for Reliance/Mc Dermott	1 No	Offshore, KG Basin, India

PRESTIGIOUS PROJECTS



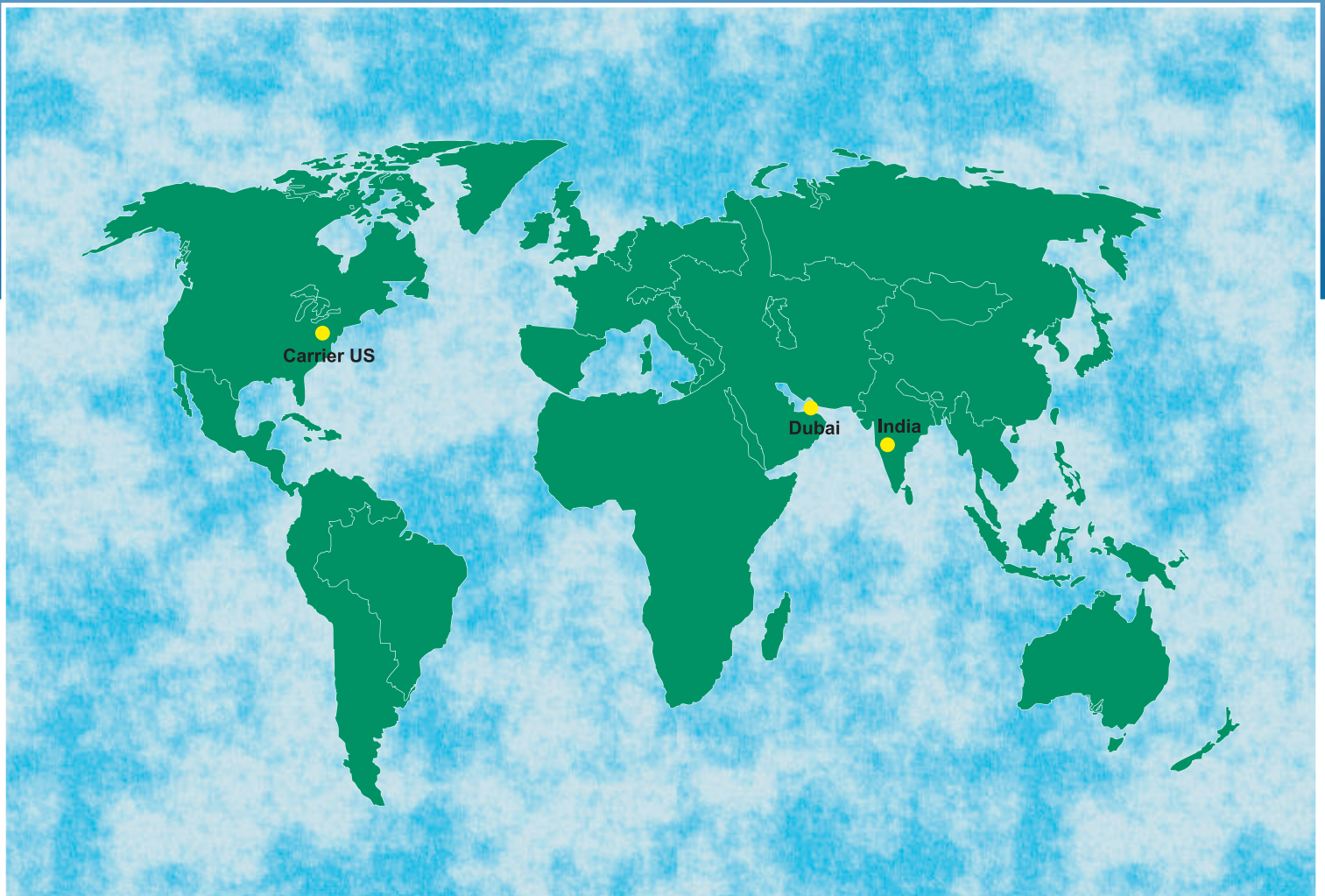
M.Y. Dubawi

Yacht of H. H. Sheikh Mohammed of Dubai



M.Y. Dubai

GLOBAL PRESENCE



AIR CONTROL [INDIA] PVT. LTD.



INDIA

1st Floor, Adams Court, Baner Road, Pune 411045

Tel: +91 7410090100 | Tel: +91 9764499933

email: info@aircontrolindia.com | web : www.aircontrolindia.com